



# COMMITMENT EQUIPMENT OPPORTUNITIES

North Jersey RC&D has opportunities for farmers in targeted watersheds to receive funding for practices that support clean water and healthy soils through the AgAssist program. The AgAssist Commitment Programs (Conservation Equipment Commitment and Precision Nutrient Management Commitment opportunities) pay farmers an upfront payment per acre to commit to three years of cover crop and no-till/minimal till management or three years of precision nutrient management on enrolled fields.

## CONSERVATION EQUIPMENT COMMITMENT

for farmers interested in (1) purchasing or upgrading a no-till drill or broadcaster and (2) committing to the use of minimal and no-till management in the enrolled fields for three-years. Cash crops must be managed with no-till.

### DURATION

Three years starting with the first winter cover crop season following the purchase of equipment through the opportunity.

### PAYMENT RATE

One-time, upfront payment:

\$141/acre

Maximum enrollment acres = 150 acres

Maximum rate: Up to 50% of eligible equipment costs

### REQUIRED ACTIONS

- Supply proper receipts and work with North Jersey RC&D staff to create field maps,
- Plant a winter cover crop for three years annually in the enrolled acres by the agreed upon dates,
- Maintain cover crop until May 1<sup>st</sup> each year, and
- No-till cash crops and cover crops for three years in the enrolled acres.

## PRECISION NUTRIENT MANAGEMENT COMMITMENT

for farmers interested in purchasing precision ag equipment to reduce nutrient and chemical applications to fields and minimize potential for run-off and leaching.

### DURATION

Three years starting with the first use of the precision ag equipment purchased through the program.

### PAYMENT RATE

One-time, upfront payment:

\$105/acre

Maximum enrollment acres = 150 acres

Maximum rate: Up to 50% of eligible equipment costs

### REQUIRED ACTIONS

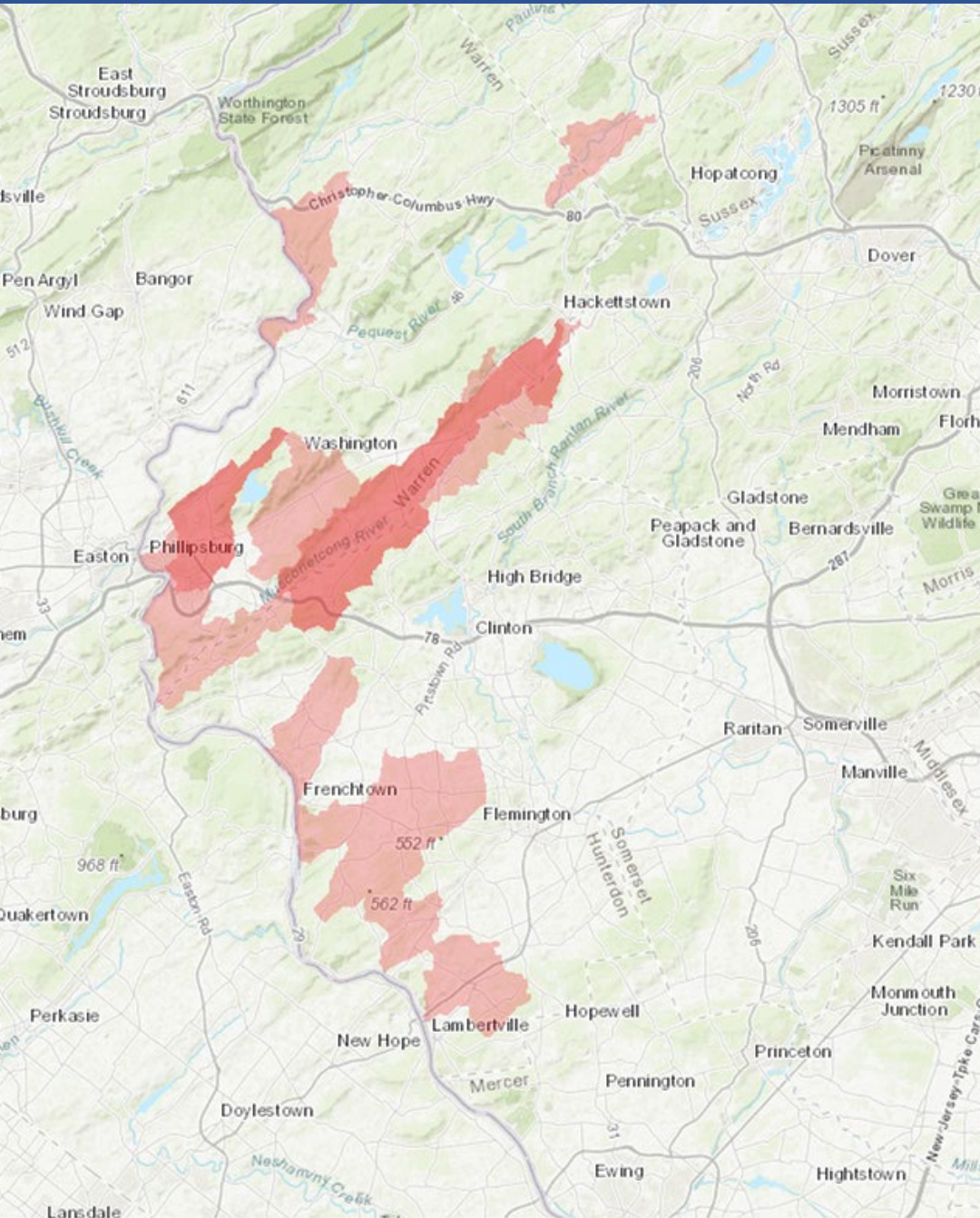
- Supply proper receipts and work with North Jersey RC&D staff to create field maps,
- Use precision ag equipment for three years in the enrolled fields, and
- Track inputs using the precision ag equipment and aim to reduce inputs compared to prior use of the precision ag equipment.

**ADDITIONAL AGASSIST COST-SHARE OPPORTUNITY: (\$15,000 CAP PER FARM AND UP TO 75-95% REIMBURSEMENT RATE DEPENDENT ON OPPORTUNITY):**

- Livestock Exclusion Fence
- Rotational grazing fence and essential supplies
- Roof run-off structures
- Waterways and diversions
- Vegetated treatment areas
- Windbreak/Riparian buffer establishment and renovation
- Cover crop seed expenses
- Composting or small manure storage system
- Soil tests for biological assessments



# COMMITMENT EQUIPMENT OPPORTUNITIES (continued)

**WHO IS ELIGIBLE:**

Farmers within targeted watersheds (highlighted in red/pink on map). Visit the link at the bottom of the page for an interactive map.

**WHAT IS FUNDED**

Conservation Equipment Commitment: No-till drill, or broadcaster box

Precision Nutrient

Management: Including, but not limited to, sprayer nozzle upgrades for drift reduction and Y drop N management; sprayer boom priming tech; precision shut off; variable rate mapping software; 2x2 N banding systems; conceal 3x3 N banding tech; Furrow Jet N and P banding tech; precision liquid measurement and control tech; variable seed placement and row shutoff tech

**TO APPLY:** Farmers complete an online application at the link below. Applications will be accepted on a rolling basis and batch processed on a monthly basis..

Visit: <https://www.northjerseyrcd.org/agassist-commitment>

Contact Sam at [sloscalzo@northjerseyrcd.org](mailto:sloscalzo@northjerseyrcd.org)

Or call (908) 574-5368 for more information